



SOLAR WATER PUMPING SYSTEM

www.jpsolarenergy.com

ABOUT US

JP SOLAR has been foremost in the photovoltaic system technology with Power plant design, Solar On grid power plant (Residential and Commercial), Solar water pump, solar module, Solar panel cleaning system for all types of applications. We have excellent team of technical person to overcome the entire photovoltaic problem. We are therefore positioned to support your daily business worldwide adequately and effectively. Through our production in India and the tight interconnection of the entire delivery chain.

JP SOLAR is a successful company having wide range of AMRUT solar water pump (ALL INDIA SOLAR PUMP DESIGNER AND DISTRIBUTOR FOR AMRUT PUMP SINCE 2013) by cutting edge technology and industry expertise to fulfill renewable energy dream of the world. Our company wide expertise covers the engineering procurement and construction (EPC) for our customers. Innovation and the implementation of the technology keep us ahead in the market of solar energy. Our highly qualified and motivated team provides tailor made solution for each project with ultimate design, advanced quality of raw materials and seamless engineering for our high esteemed customers to empower their energy needs. With our vision, skills, dedication and customer friendly approach we have built solid foundation and established long relationship with our clients, in which we always believe. We would like to serve you for the green energy and the best technology.

WHY US?

- We have all types of pumps such as vertical submersible pump, surface/monoblock pump and open-well pump. We have different models available such as V3, V4, V6, V7, V8 and V10 with voltage ranging from 80V to 415V.
- We specialize in manufacturing highly efficient V4 series solar submersible oil-filled pump.



- We are equipped with certified and highly advanced technology for pump manufacturing.
- We design pumps with low power consumption and an overall efficiency of 35 percent in all types.
- We manufacture high discharged based SS solar submersible pump and high head based V4 and V6 series pump.
- We make SS 410 impeller for pumps using die cast method to prevent sand, rock and other particles.
- We design our pumps considering maximum mechanical efficiency as well as maximum hydraulic efficiency.

OUR TEAM



We do this by ensuring that our team has the right skill and attitude. JP SOLAR has well qualified team of engineers who applies core values every day and serve as the foundation for interaction with customers, supplies and business partners. JP SOLAR embraces these core values as essential in achieving long term goals of becoming one of the leading vertically integrated companies in Solar pump business.



SOLAR PUMPS

JP SOLAR pumps offer incredible features coupled with excellent performance, thus making a distinctive mark in the pump market. Ranging from 0.5 HP- 50 HP, we offer solar submersible pump, solar surface mono-block pump and solar open-well pump.

JP SOLAR has always been a pioneer in state of the art technology which helps in producing highly energy efficient, reliable and durable solar pumps. We offer hybrid solar pumps which use on solar energy in the day and electricity in the night. Our solar water pumps are standalone systems operating on power generated using highly efficient Photo-Voltaic (PV) system.

Some of the features include:

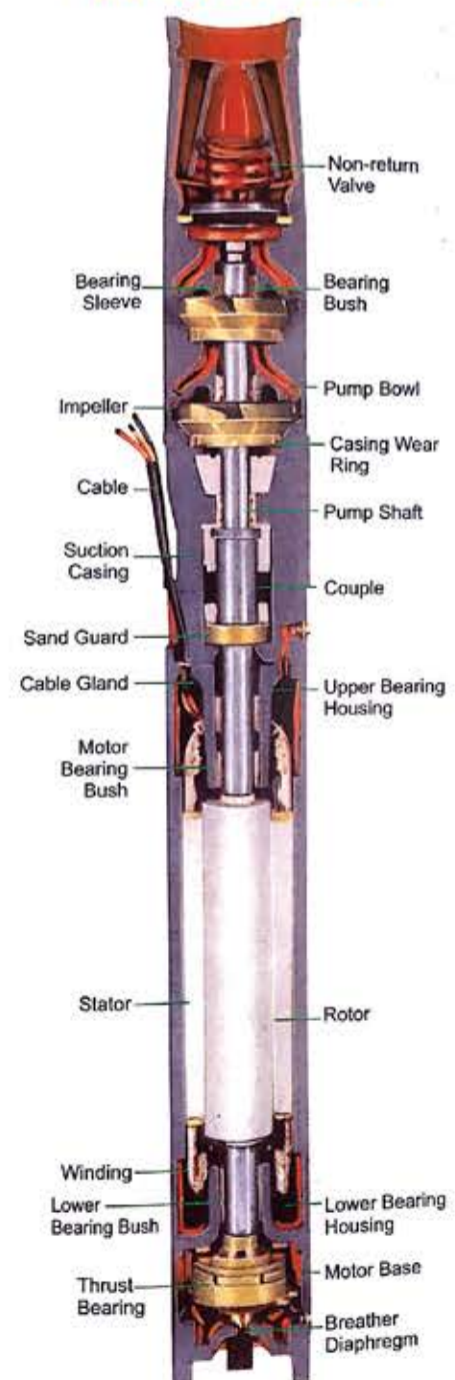
1. Three phase low voltage and high voltage AC submersible pump
2. MPPT VFD pump controller
3. Low maintenance of pump
4. AC motor
5. Soft start feature prevents water hammering and increases system life
6. Easy to install
7. GI structure with the manually movable option

SOLAR SUBMERSIBLE PUMPS

JP SOLAR offers a wide range of solar submersible pumps ranging from 0.5 HP to 50 HP. A solar submersible pump has a mini powerhouse at its heart and consists of a calibrated and matching solar array of modules tuned with the equivalent power of pump for that particular application. The solar water pumping system is capable of running all types of electrical water pumps with applications varying from irrigation to household demands.

We also provide hybrid solar pump which can run on both the solar and electric power.

sectional view



SOLAR OPEN WELL PUMPS

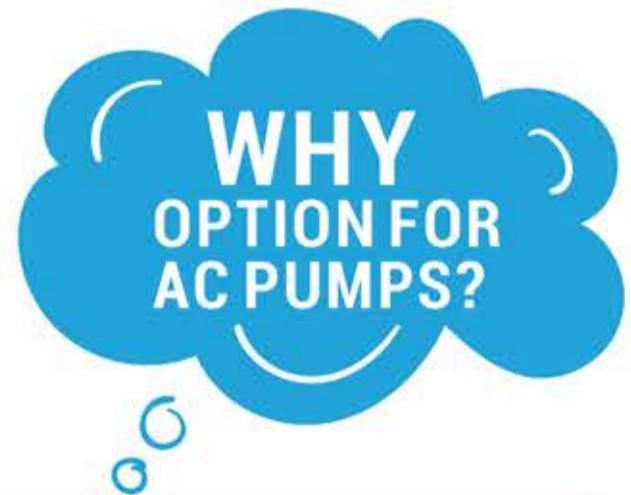
JP SOLAR offers solar open well pumps ranging from 1 HP to 30 HP. Our three phase pumps developed using very high quality material and state-of-the-art manufacturing process. Our solar open well pumps are ideal for open well where there is a fluctuation in the water level. The solar pump rests at the bottom of the well and functions beneath the water. We also provide hybrid solar pump which can run on both the solar and electric power.

SOLAR MONOBLOCK PUMPS

JP SOLAR offers solar surface monoblock pumps ranging from 1 HP to 15 HP. These pumps are easy to install, have low maintenance cost and offers great efficiency.

APPLICATION

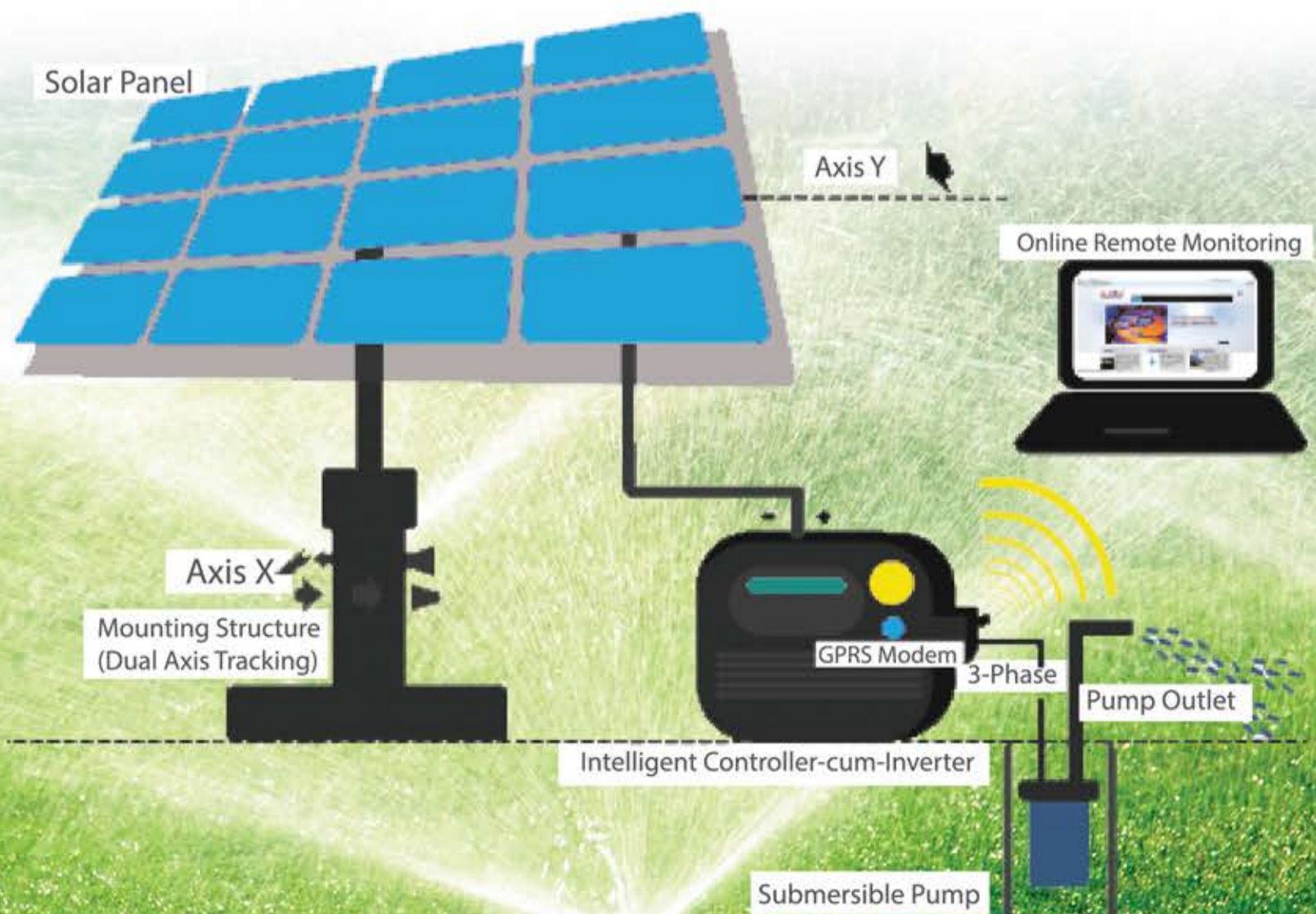
- IRRIGATION
- DOMESTIC & INDUSTRIAL WATER SUPPLY
- FOUNTAINS
- SPRINKLER SYSTEMS



FACTORS	SOLAR AC WATER PUMPS	SOLAR DC WATER PUMPS
Cost	Low Compared To Dc	High
Capacity Available From Indian Manufactures	0.5 HP -50 HP	1 - 5 HP
Ability To Run On Mains During Night/ When Solar Absent	YES	No
Installation & Servicing	Easy	Difficult
Available Application	Submersible/Monoblock/ Openwell	Mostly Submersible only
Reliability	Good	Poor
Maintenance	Low	High
Reparing At	Low Cost	Not Possible

SPECIAL ATTRACTION OF OUR SOLAR AC WATER PUMPING SYSTEM:

- Dual mode operation i.e. can be operated on Solar as well as Electric supply
- Inbuilt MPPT tracking facility to get maximum power output from the solar Array.
- High Efficiency
- High life cycle
- Sensor less Dry Run Protection
- High Temperature Protection
- Reverse Polarity Protection
- Tank over flow protection
- Over voltage protection
- Under voltage protection
- Over Load Protection
- Highly Durable and Reliable



0.5 to 1 HP SOLAR PUMP

RADIAL FLOW / WATER FILLED

Impeller	Noryl
Pump Bowl	Noryl
Pump Jacket	SS 202
Pump Bush	Nitrial Rubber
Pump Shaft	SS 410
Suction Brakcet	FG 200
Pump Hardware	SS 304
Rotor Shaft / Rotor Sleeve	EN9 / SS 410
Motor Bush	LTB 5 Grade
Thrust Bearing	SS 304
Lower & Upper Housing	FG 200
Motor Shell	SS 304
Winding Wire	Copper (PP)
Motor Hardware	SS 304
Thrust Plate	Carbon



HP/KW	0.5 HP / 0.37 Kw	1 HP / 0.75 Kw
Stage	10	22
Voltage	140 V	110 V
Mechanical Watt	600 W	850 W
Discharge outlet (In Inch)	1.25 "	1.25 "
Head (in meters)	30 meter	45 meter
Discharge in LPM	25 LPM	40 LPM
Shut Off Head	50 meter	65 meter
overall efficiency	30.00%	30.00%
Outer Dia.	68 mm	68 mm
Maximum AMP	3.0 A	5.5 A
Size of cable	1 * 3 * 2.5 sq.mm	1 * 3 * 2.5 sq.mm
RPM	2800	2800

1.0 to 5.0 HP SOLAR PUMP

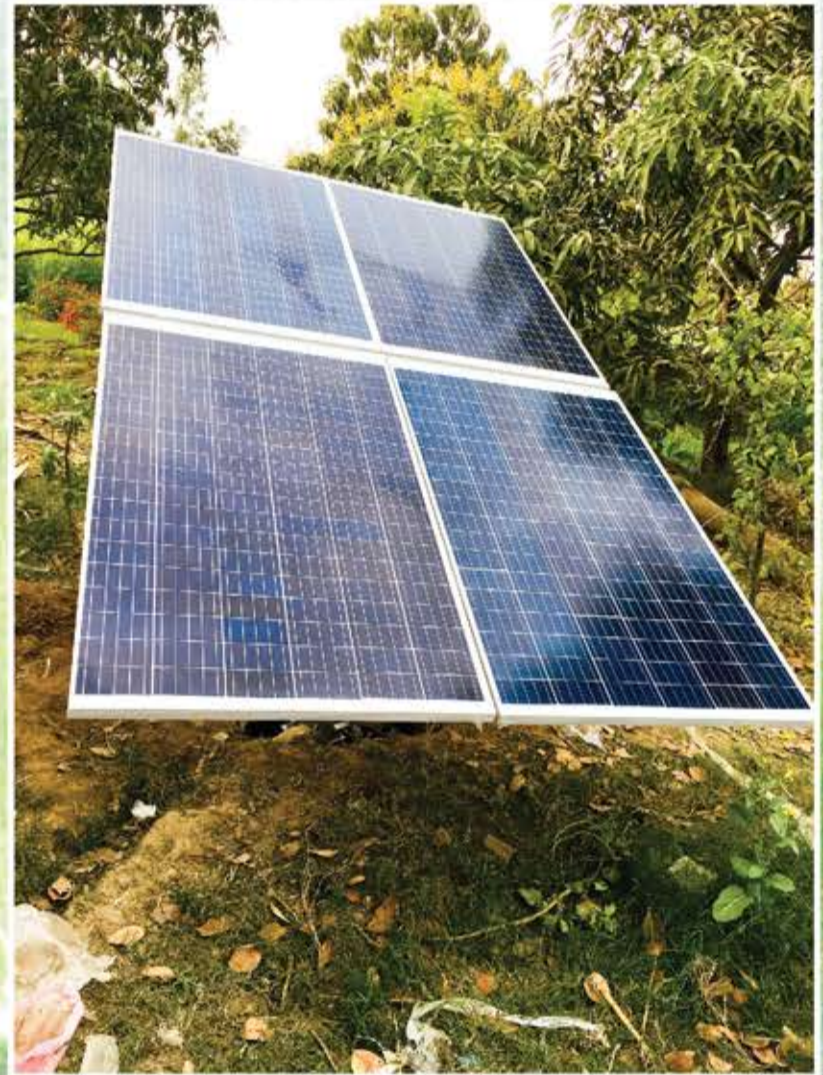
RADIAL FLOW / OIL OR WATER FILLED

Impeller	Noryl
Pump Bowl	Noryl
Pump Jacket	SS 202
Pump Bush	Nitril Rubber
Pump Shaft	SS 410
Suction Brakcet	FG 200
Pump Hardware	SS 304
Rotor Shaft / Rotor Sleeve	EN9 / SS 410
Motor Bush	LTB 5 Grade
Thrust Bearing	SS 304
Lower & Upper Housing	FG 200
Motor Shell	SS 304
Winding Wire	Copper (PP)
Motor Hardware	SS 304
Thrust Plate	Carbon

**V4
SERIES**



				DC MODEL
HP/KW	1 HP / 0.75 Kw	1 HP / 0.75 Kw	1 HP / 0.75 Kw	1 HP / 0.75 Kw
Stage	13	14	14	14
Voltage	80 V	110 V	160 V	80 V - 110V
Mechanical Watt	850 W	850 W	850 W	850 W
Discharge outlet (In Inch)	1.25 "	1.25 "	1.25 "	1.25 "
Head (in meters)	60 meter	55 meter	50 meter	70 meter
Discharge in LPM	30 LPM	35 LPM	40 LPM	25 LPM
Shut Off Head	75 meter	78 meter	80 meter	90 meter
Overall efficiency	30.00%	30.00%	30.00%	60.00%
Outer Dia.	95 mm	95 mm	95 mm	95 mm
Maximum AMP	7.0 A	6.0 A	4.0 A	7.0 A
Size of cable	1 * 3 * 2.5 sq.mm	1 * 3 * 2.5 sq.mm	1 * 3 * 2.5 sq.mm	1 * 3 * 2.5 sq.mm
RPM	2800	2800	2800	3600



2 HP / 1.5 Kw	2 HP / 1.5 Kw	3 HP / 2.2 Kw	3 HP / 2.2 Kw	5 HP / 3.7 Kw
12	25	15	25	30
160 V	160 V	230 V	230 V	380 V
1700 W	1700 W	2700 W	2700 W	4400 W
1.5 "	1.25 "	1.5 "	1.5 "	1.5 "
30 meter	90 meter	50 meter	90 meter	100 meter
120 LPM	30 LPM	120 LPM	60 LPM	90 LPM
50 meter	110 meter	80 meter	120 meter	130 meter
30.00%	30.00%	30.00%	30.00%	36.00%
95 mm	95 mm	95 mm	95 mm	95 mm
8.0 A	8.0 A	8.0 A	8.0 A	8.0 A
1 * 3 * 2.5 sq.mm	1 * 3 * 2.5 sq.mm	1 * 3 * 2.5 sq.mm	1 * 3 * 2.5 sq.mm	1 * 3 * 2.5 sq.mm
2800	2800	2800	2800	2800

5.0 to 20.0 HP SOLAR PUMP

RADIAL OR MIXED FLOW /WATER FILLED

Impeller	SS 410
Pump Bowl	FG 200
Pump Bush	Nitrial Rubber
Pump Shaft	SS 410
Suction Brakcet	FG 200
Pump Hardware	SS 304
Rotor Shaft / Rotor Sleve	EN9 / SS 410
Motor Bush	LTB 5 Grade
Thrust Bearing	SS 304
Lower & Upper Housing	FG 200
Motor Shell	SS 304
Winding Wire	Copper (PP)
Motor Hardware	SS 304
Thrust Plate	Carbon

**V6
SERIES**



HP/KW	5 HP / 3.7 Kw	5 HP / 3.7 Kw	7.5 HP / 5.5 Kw	7.5 HP / 5.5 Kw
Stage	8	4	5	6
Voltage	380 V	380 V	300 V	300 V
Mechanical Watt	4400 W	4400 W	6800 W	6800 W
Discharge outlet (In Inch)	2.0 "	3 "	3 "	2.5 "
Head (in meters)	60 meter	30 meter	30 meter	50 meter
Discharge in LPM	200 LPM	470 LPM	680 LPM	340 LPM
Shut Off Head	80 meter	40 meter	45 meter	75 meter
Overall efficiency	48.00%	48.00%	48.00%	48.00%
Outer Dia.	142 mm	142 mm	142 mm	142 mm
Maximum AMP	8.0 A	8.0 A	17.0 A	17.0 A
Size of cable	1 * 3 * 2.5 sq.mm	1 * 3 * 2.5 sq.mm	1 * 3 * 4.0 sq.mm	1 * 3 * 4.0 sq.mm
RPM	2800	2800	2800	2800



10 HP / 7.5 Kw

16

380 V

8500 W

2.0 "

120 meter

200 LPM

155 meter

48.00%

142 mm

17.0 A

1 * 3 * 4.0 sq.mm

2800

10 HP / 7.5 Kw

5

380 V

8500 W

3 "

30 meter

800 LPM

50 meter

48.00%

142 mm

17.0 A

1 * 3 * 4.0 sq.mm

2800

15 HP / 11.0 Kw

13

380 V

12000 W

2.5 "

100 meter

330 LPM

150 meter

48.00%

142 mm

24.0 A

1 * 3 * 6.0 sq.mm

2800

20 HP / 15.0 Kw

25

380 V

16000 W

2.0 "

200 meter

250 LPM

240 meter

48.00%

142 mm

30.0 A

1 * 3 * 10.0 sq.mm

2800

1.0 to 10.0 HP SOLAR SS PUMP

RADIAL FLOW / OIL OR WATER FILLED

	V4 Series	V6 Series
Impeller	SS 410	SS 410
Pump Bowl	SS 304	SS 304
Pump Bush	Nitrial Rubber	Nitrial Rubber
Pump Shaft	SS 410	SS 304
Suction Brakcet	SS 304	SS 304
Pump Hardware	SS 304	SS 304
Rotor Shaft / Rotor Sleeve	EN9 / SS 410	EN9 / SS 410
Motor Bearing Bush	LTB 5 Grade	LTB 5 Grade
Thrust Bearing	SS 304	SS 304
Lower & Upper Housing	SS 304	SS 304
Motor Shell	SS 304	SS 304
Winding Wire	Copper (PP)	Copper (PP)
Motor Hardware	SS 304	SS 304
Thrust Plate	Carbon	Carbon

V4
SS SERIES



V4 Series

	1 HP / 0.75 Kw	1 HP / 0.75 Kw	2 HP / 1.5 Kw	3 HP / 2.2 Kw
HP/KW	1 HP / 0.75 Kw	1 HP / 0.75 Kw	2 HP / 1.5 Kw	3 HP / 2.2 Kw
Stage	14	14	12	14
Voltage	80 V-110 V	110 V	160 V	230 V
Mechanical Watt	850 W	850 W	1600 W	2500 W
Discharge outlet (In Inch)	1.25 "	1.25 "	2.0 "	2.0 "
Head (in meters)	70 meter	40 meter	30 meter	50 meter
Discharge in LPM	25 LPM	35 LPM	120 LPM	145 LPM
Shut Off Head	90 meter	55 meter	50 meter	75 meter
Overall efficiency	65.00%	35.00%	35.00%	35.00%
Outer Dia.	95 mm	95 mm	95 mm	95 mm
Maximum AMP	7.0 A	6.0 A	8.0 A	8.0 A
Size of cable	1 * 3 * 2.5 sq.mm	1 * 3 * 2.5 sq.mm	1 * 3 * 2.5 sq.mm	1 * 3 * 2.5 sq.mm
RPM	3600	2800	2800	2800



V6
SS SERIES



V6 Series

HP/KW	5 HP / 3.7 Kw	7.5 HP / 5.5 Kw	10 HP / 7.5 Kw
Stage	5	7	10
Voltage	380 V	300 V	380 V
Mechanical Watt	4100 W	5800 W	7500 W
Discharge outlet (In Inch)	2.0 "	2.0 "	2.0 "
Head (in meters)	50 meter	70 meter	100 meter
Discharge in LPM	230 LPM	250 LPM	190 LPM
Shut Off Head	75 meter	90 meter	150 meter
Overall efficiency	50.00%	50.00%	50.00%
Outer Dia.	142 mm	142 mm	142 mm
Maximum AMP	8.0 A	17.0 A	17.0 A
Size of cable	1 * 3 * 2.5 sq.mm	1 * 3 * 4.0 sq.mm	1 * 3 * 4.0 sq.mm
RPM	2800	2800	2800

1.0 to 5.0 HP SOLAR MONOBLOCK PUMP

CENTRIFUGAL SURFACE TYPE

Impeller	Cast Iron FG200
Pump Casting	Cast Iron FG200
Mechanical seal	Rubber
Pump Shaft	SS 410
Pump Hardware	SS 304
Motor Body	Cast Iron FG200
Motor Shaft	SS 410
Motor Bearing Type	Ball Bearing
Winding Wire	Copper
Motor Hardware	SS 304



HP/KW	1 HP / 0.75 Kw	1 HP / 0.75 Kw	2 HP / 1.5 Kw
Stage	1	1	1
Voltage	160 V	160V	350 V
Mechanical Watt	800 W	800 W	1600 W
Discharge outlet (In Inch)	2 "	3 "	2 "
Suction outlet (In Inch)	2 "	3 "	2.5 "
Head (in meters)	10 meter	6 meter	12 meter
Discharge in LPM	300 LPM	600 LPM	450 LPM
Shut Off Head	18 meter	12 meter	24 meter
Overall efficiency	30.00%	30.00%	30.00%
Maximum AMP	3.5 A	3.5 A	4.0 A
Size of cable	1 * 3 * 1.5 sq.mm	1 * 3 * 1.5 sq.mm	1 * 3 * 1.5 sq.mm
RPM	2800	2800	2800



2 HP / 1.5 Kw	3 HP / 2.2 Kw	3 HP / 2.2 Kw	5 HP / 3.7 Kw	5 HP / 3.7 Kw
1	1	1	1	1
350 V	230 V	230 V	380 V	380 V
1600 W	2400 W	2400 W	4000 W	4000 W
3 "	3 "	4 "	3 "	4 ' '
3 "	3 "	4 "	3 "	4 ' '
8 meter	8 meter	8 meter	6 meter	6 meter
700 LPM	900 LPM	1200 LPM	1200 LPM	1600 LPM
18 meter	22 meter	14 meter	26 meter	18 meter
30.00%	30.00%	30.00%	40.00%	40.00%
4.0 A	8.0 A	8.0 A	8.0 A	8.0 A
1 * 3 * 1.5 sq.mm	1 * 3 * 2.5 sq.mm	1 * 3 * 2.5 sq.mm	1 * 3 * 2.5 sq.mm	1 * 3 * 2.5 sq.mm
2800	2800	2800	2800	2800

3.0 to 10.0 HP SOLAR OPENWELL PUMP

Horizontal Submersible Type

Impeller	Cast Iron FG200
Pump Casting	Cast Iron FG200
Mechanical seal	Rubber
Pump Shaft	SS 410
Pump Hardware	SS 304
Motor Shell	SS 304 / FG200
Motor Shaft	SS 410
Thrust Bearing	Gunmetal
Stator Shell	SS 304
Winding Wire	Copper
Motor Hardware	SS 304
Thrust Plate	Fiber



HP/KW	3 HP / 2.2 Kw	3 HP / 2.2 Kw	5 HP / 3.7 Kw
Stage	1	1	1
Voltage	230 V	230 V	380 V
Mechanical Watt	2700 W	2700 W	4400 W
Discharge outlet (In Inch)	3 "	4 "	3 "
Suction outlet (In Inch)	3 "	4 "	3 "
Head (in meters)	8 meter	6 meter	15 meter
Discharge in LPM	750 LPM	1000 LPM	800 LPM
Shut Off Head	24 meter	18 meter	28 meter
Overall efficiency	30.00%	30.00%	40.00%
Maximum AMP	8.0 A	8.0 A	8.0 A
Size of cable	1 * 3 * 2.5 sq.mm	1 * 3 * 2.5 sq.mm	1 * 3 * 2.5 sq.mm
RPM	2800	2800	2800



5 HP / 3.7 Kw	7.5 HP / 5.5 Kw	7.5 HP / 5.5 Kw	10 HP / 7.5 Kw	10 HP / 7.5 Kw
1	1	1	1	1
380 V	300 V	300 V	380 V	380 V
4400 W	6500 W	6500 W	8000 W	8000 W
4 "	4 "	5 "	4 "	5 "
4 "	4 "	5 "	4 "	5 "
8 meter	15 meter	8 meter	22 meter	8 meter
1100 LPM	1400 LPM	2400 LPM	1300 LPM	3000 LPM
20 meter	28 meter	18 meter	35 meter	22 meter
40.00%	40.00%	40.00%	40.00%	40.00%
8.0 A	17.0 A	17.0 A	17.0 A	17.0 A
1 * 3 * 2.5 sq.mm	1 * 3 * 4.0 sq.mm	1 * 3 * 4.0 sq.mm	1 * 3 * 6 sq.mm	1 * 3 * 6 sq.mm
2800	2800	2800	2800	2800

SOLAR PUMP CONTROLLER Variable Frequency Drive



ABOUT JP SOLAR PUMP CONTROLLER

- The JP Solar Pump Controller is designed to run any electric Three Phase Submersible and monoblock Pump/ Motor.
- The JP provides water in remote location by converting high solar Output DC from Solar Panel into AC to run a standard AC Submersible Pump/Motor
- When Solar Power is not available controller can be automatically or Manually switched to an alternating single phase or three phase input AC

SILENT FEATURES

LCD display shows Frequency (%), input DC voltage, Output AC voltage and current,

- MPPT- Maximum power point tracking for maximizing the efficiency of input power.
- Uses MPPT Technology to maximize water delivery at various solar energy levels.
- Soft starter features prevents water hammering and increase system life.
- High flow system for faster tank fill and significant water output.
- Simple installation and requires less maintenance.
- Solar pump controller: optional features (ac/dc change over, Grid sharing facility, Difference voltage range controller and RMS facility).

JP SOLAR SYSTEM INCLUDE

- SOLAR Pump and Motor (Optional)
- JP SOLAR pump controller (MPPT)
- Motor and controller Rating Available in the range of 1 HP TO 100 HP

APPLICATION

- Tank filling
- Wild life & Farms
- Rural water supply for villages & homesteads
- Irrigation system in Agriculture
- Fountains

	JP SPC 1 HP	JP SPC 2 HP	JP SPC 3 HP	JP SPC 5 HP	JP SPC 7.5 HP	JP SPC 10 HP	JP SPC 15 HP	JP SPC 20 HP	JP SPC 25 HP	
DC Input	TECHNICAL DATA									
	1 HP 110 V & 160 V pump	2 HP 160 V & 350 V pump	3 HP 230 V & 380 V pump	5 HP 380 V pump	7.5 HP 300 V pump	10 HP 415 V pump	15 HP 415 V pump	20 HP 415 V pump	25 HP 415 V pump	
	Input power	1000 W	2000 W	3000 W	5000 W	8000 W	10000 W	15000 W	20000 W	25000 W
	Max Input DC voltage (Voc)	440 Vdc in 230 V Pump / 800 Vdc in 415 V Pump								
	MPPT Voltage	400-650 Vdc in 415 V range 50-360 Vdc in 230 V Range								
	MPPT efficiency	98%								
	Applicable Motor	0.7KW/ 1HP	1.5KW/ 2 HP	2.2KW/ 3 HP	3.7KW/ 5 HP	5.5KW/ 7.5 HP	0.7KW/ 10 HP	11 KW/ 15 HP	11 KW/ 15 HP	18 KW/ 25 HP
	Output Power									
AC Output	Rated Output	0-230 VAC & 0-415 VAC								
	Voltage									
	Output Frequency	0 – 120 Hz								
	Output Current	5 A & 7 A	10A	10A	10A	17 A	17 A	25 A	32 A	37 A
Mechanical Data	Dimension	300 * 220 * 450	300 * 220 * 450	300 * 220 * 450	300 * 300 * 600	300 * 300 * 600	395 * 300 * 700	395 * 300 * 700	395 * 300 * 700	395 * 300 * 700
	(W * D * H)	In mm	In mm	In mm	In mm	In mm	In mm	In mm	In mm	In mm

SUGGESTED PANEL & PANEL CONNECTION FOR SOLAR PUMPS

SOLAR SUBMERSIBLE/ MONOBLOCK/ OPEN WELL PUMP

MOTOR HP	MODEL NO	MOTOR VOLTAGE	MOTOR CURRENT	PANEL REQUIRE	PANEL SETUP
1 HP	1 HPJP80/110	80 V / 110 V	6.0 A	260W * 4 Panel (60 Cell)	4 Pannel in series
				325W * 3 Panel (72 Cell)	3 Pannel in series
1 HP	1 HPJP160	160 V	4.0 A	260W * 4 Panel (120 Cell)	4 Pannel in series
				325W * 3 Panel (144 Cell)	3 Pannel in series
2 HP	2 HPJP160	160 V	8.0 A	260W * 8 Panel (60 Cell)	8 Pannel in series
2 HP	2 HPJP350	350 V	4.5 A	325W * 6 Panel (72 Cell)	6 Pannel in series
				260W * 8 Panel (120 Cell)	8 Pannel in series
				300W * 7 Panel (144 Cell)	7 Pannel in series
3 HP	3 HPJP230	230 V	8.0 A	260W * 12 Panel (60 Cell)	12 Pannel in series
3 HP	3 HPJP380	380 V	8.0 A	315W * 10 Panel (72 Cell)	10 Pannel in series
				315W * 10 Panel (108 Cell)	10 Pannel in series
5 HP	5 HPJP380	380 V	8.0 A	260W * 20 Panel (60 Cell)	20 Pannel in series
				325W * 16 Panel (72 Cell)	16 Pannel in series
7.5 HP	7.5 HPJP300	300 V	16.0 A	260W * 30 Panel (60 Cell)	(15 Pannel in series)*2
				325W * 24 Panel (72 Cell)	(12 Pannel in series)*2
10 HP	10 HPJP380	380 V	16.0 A	260W * 40 Panel (60 Cell)	(20 Pannel in series)*2
				325W * 32 Panel (72 Cell)	(16 Pannel in series)*2
15 HP	15 HPJP380	380 V	22.5 A	260W * 60 Panel (60 Cell)	(20 Pannel in series)*3
				325W * 48 Panel (72 Cell)	(16 Pannel in series)*3
17.5 HP	17.5 HPJP380	380 V	27.5 A	260W * 72 Panel (60 Cell)	(15 Pannel in series)*4
				315 W * 60 Panel (72 Cell)	(15 Pannel in series)*4
20 HP	20 HPJP380	380 V	30.0 A	260W * 80 Panel (60 Cell)	(20 Pannel in series)*4
				325 W * 64 Panel (72 Cell)	(16 Pannel in series)*4



HISTORY OF AMRUT PUMPS

Amrit Engineering was established in 1972. The company has rich experience in manufacturing Submersible Pumps Sets under the brand name of "AMRUT PUMPS®". It was awarded ISO 9001 by Ms. DET NORSKE VARITAS, The Netherlands since 1996. The most modern equipments, advanced technology and we'll experienced expertise personals are the assets of the company. We produce best quality pumps, bore well submersible pump sets ranging from 75mm-350mm and mono block submersible pump sets at various capacities. To overcome the cut-throat competition in domestic and international market we always update the quality system and new technology. Deep well bore well pumps and mono block submersible pump sets and open well application at various capacities.

Amrit Engineering has acquired the status of being one of the leading and largest manufactures of submersible pumps and mono block pumps in Gujarat - India. It is one of the leading Manufactures in India and Exporters of submersible pump and mono block pumps sets to African Countries, UAE, Bangladesh, Sri Lanka, Nepal, Sudan, Morocco, South East Asian Countries etc.

Company Profile

Amrit has made huge investment in plant & latest machinery, implementation of their R&D Department and maintenance of international quality system. We believe in 100% customer satisfaction as Quality and Customers are our major strength. Our continuous research and up gradation of our latest technology in the filed of Submersible Pump and Mono Block Pump manufacturing industry helps us to grow as one of the major supplier. We do not consider ourselves merely a submersible pump or mono block pump manufacturer or suppliers but rather, a serious and reliable long-term business partner for our clients across the globe.

Quality Policy

We strongly believe in periodical maintenance of International Quality Systems and Implementation of latest Technologies. Company have fully equipped with measuring instruments and tooling machines at machine shop to ensure standardization of products. We have established Quality Management System in accordance with ISO 9001:2008. AMRUT believes customer satisfaction excellence in all areas of operation through products of high quality performance and strength with low power consumption due to high overall efficiency. AMRUT has always believed in 100% customer satisfaction by excellence in all areas of operation through products of high quality and performance and strength lies in responding to the customer needs and strived to bring the best possible technologies, proper selection, dealers' network, service after sales, methodologies and equipment to enhance customer satisfaction.

AMRUT®





AMRUT[®]

📍 Reg. Office

1113, Fortune Business Hub,
Science City Road, Ahmedabad 380060

Shreeji Complex, Main Bazaar,
Patdi, Dist- Surendranagar 382765

✉ Email

info@jpsolarenergy.com
sales@jpsolarenergy.com

☎ Mobile

+91 9904795075
+91 9723463466
+91 9574207139

🌐 www.jpsolarenergy.com

📍 Reg. Office & Works

115/1-2, GIDC ESTATE
Visnagar-384315. (Gujarat)

📍 Corporate Office

Amrut House, Sola Bhagavat Road,
Near High Court Quarters, Sola 380060

🌐 www.amrutsubpump.com

